

CHRISTIAN REID  
ESTATE AGENTS



19 Gingers Close

£395,000

Cranleigh, GU6 7JL



3 Bedrooms



2 Receptions



1 Bathrooms



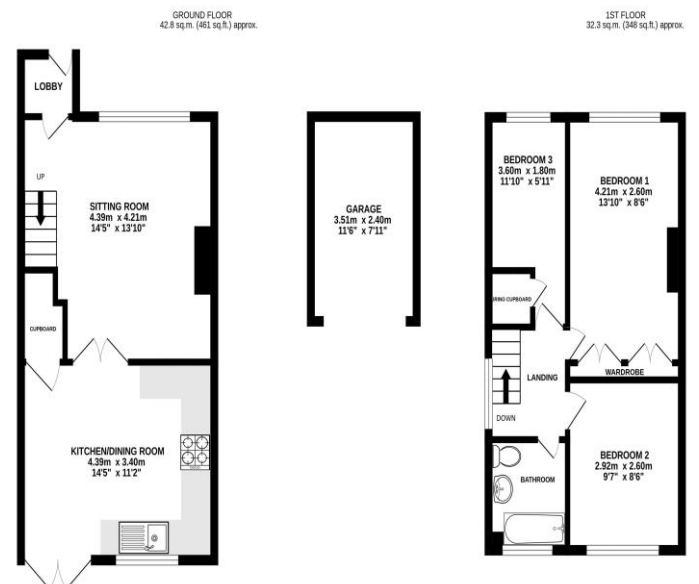
Semi Detached



EPC:



An improved three-bedroom end-of-terrace home situated in a quiet close in Cranleigh, with pedestrian access only to the front and the benefit of a small driveway and garage to the rear. The property is presented in a modern, minimalist style with a stylish colour scheme and offers well-proportioned accommodation, including a large living room and an attractive kitchen/dining room with French doors opening onto a pretty, well-secluded garden. Conveniently located within easy reach of the village High Street.



TOTAL FLOOR AREA: 75.1 sq.m. (808 sq.ft.) approx.

Whilst every attempt has been made to ensure the accuracy of the floorplan contained herein, measurements of doors, windows, rooms and any other items are approximate and no responsibility is taken for any error, omission or mis-statement. This plan is for illustrative purposes only and should be used as such for any prospective purchase. The services, systems and appliances shown have not been tested and no guarantee as to their operability or efficiency can be given.

Made with Metropix 62025